



BULL DAWG SUV HARDTOPS

The Perfect Companion for your Sport SUV

Another quality company by McLaughlin Manufacturing.

4737 Adams Road

Chattanooga, TN 37411

www.bulldawgmfg.com

800-784-6478



SQ5550-PT-OE H D Roof Rack Installation Instructions

1997 to 2006 TJ 1-PC JEEP HARDTOP

(You can also view this installation sheet in color online at:

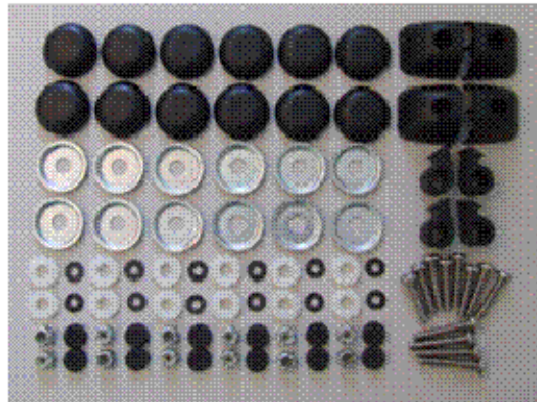
<http://www.bulldawgmfg.com/BullDawgmfginstall.pdf>)

To Enjoy Your “**SPORIREK** Roof Rack” & “BullDawg Hardtop” for many years to come, proper installation is critical. **Read all instructions carefully before beginning the installation process. Improper use of this product could cause serious injury to the vehicle occupants and damage to the Hardtop.**

Warning: This product is only designed for the Jeep Wrangler TJ built from 1997 to 2006. This product is NOT to be installed on other vehicles. Maximum load for this rack is 250lbs, evenly distributed on the crossbar assemblies. **SPORIREK** Nor BullDawg, Inc. does not assume responsibility for the style or size of rack installed, improper rack installation, exceeding rack load limit, load securement methods, wind lift or any factors beyond its control. **All fasteners, knobs, and load securements should be checked frequently and tightened as necessary.**

Parts List and Hardware Identification

Hardware Kit #1

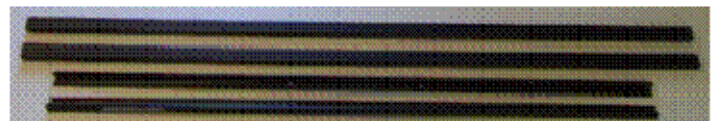


- #10-24x1" Machine Screw (8)
- #10-24x1.25" Machine Screw (4)
- Neoprene Washer (12)
- Nylon Washer (12)
- Retainer Washer (12)
- Foam Washer (12)
- Nylok Nut (12)
- Snap-on Cover (12)
- Tie Down Loops (4)
- End Caps (4)

Hardware Kit #2



- Stanchion Assemblies (4)
- Crossbar End Plugs (4)
- Track Clamp Brackets (4)
- Adjustment Knobs (4)
- 3/16" Drive Rivets (4)



Crossbars (2) Side Rails (2)

Tools Required

*Tape Measure
Hand Drill
3/16 Drill Bit (3" or Longer)
Phillips Screwdriver
Pliers, Vise Grips, and/or Adjustable Wrench*

Installation Instructions

1. Assemble all four of the Stanchions into the Crossbars. Measure @ 9 ½" from the outer edge of the Crossbar to the inner of the Stanchion Assemblies. Flip over (**Making sure not to move Stanchion**) Drill a 3/16" Hole in the oval recess in the Stanchion. Insert the 3/16 Drive Rivet and hammer in place. Install Crossbar End Plug. (**The Crossbar may be cut to a shorter length if desired**)

Refer to Pictures Below



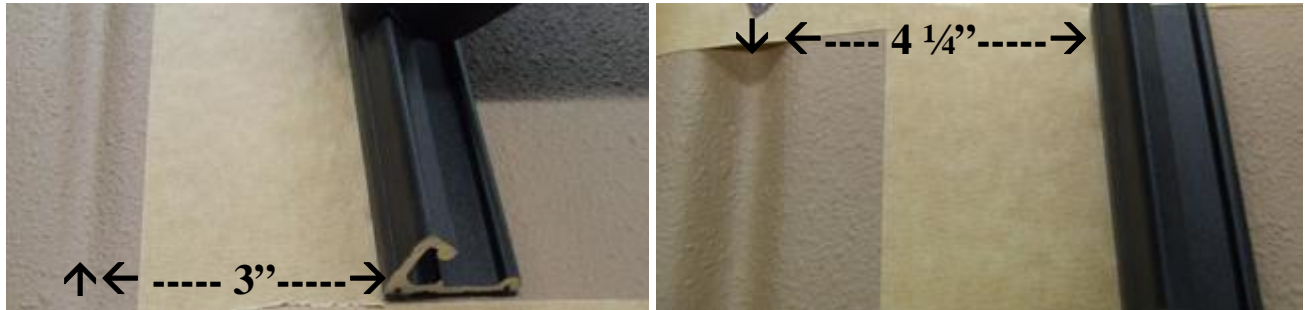
2. Assembly of the Stanchions to the Side Rails. Insert Track Clamp Bracket in Side rail. Insert Stanchion Assemblies into Clamp Bracket. Screw In Adjustment Knob. (**The entire assembly must be moved as a whole unit**) Once completed leave Stanchion Assemblies loose to allow for Side Rail alignment.

Refer to Pictures Below



3. Measure @ 3 inches from the center of the back end of the rain channel to the outer edge of the Side Rail on both sides. Then measure the rail @ 4 1/4" inches from the center of the front end of the rain channel to the outer edge of the Side Rail on both sides. **(This will take several checks to assure equal alignment as movement can/will occur)** Once correct measurement is achieved, place pieces of tape on the hardtop around the Side Rails to indicate if any movement has occurred.

Refer to Pictures Below



4. Give one final visual inspection before beginning to drill! Take one End Cap to use as a drill guide for the (2) front and (2) rear holes in the Side Rails. Drill a 3/16 hole. When finished drilling all holes install the End Caps temporarily by sliding a #10-24x1.25 into the holes, this will secure it enough to drill the rest of the Side Rail holes (6).

Refer to Picture Below



5. After all the holes are drilled, remove the roof rack from the hardtop. **(Reassemble the same as it was removed as the holes in the Side Rails may be in different locations)** Eliminate all debris and clean all of the exterior holes on the hardtop and the bottom of the Side Rails with alcohol to ensure a leak free fit. Install the (10) Foam Washers onto the Side Rails and the End Caps.

Refer to Pictures Below



6. Place the Side Rails back on the hardtop and install the Tie Down Loops (4) on each end of the Side Rails.

Refer to Picture Below



7. Install the (4) End Caps using the #10-24x1" or the #10-24x1.25 and the Neoprene Washer depending on the thickness of the hardtop and location. Do the same process for the (6) holes left in the Side Rails. **(You may have to move screws around until you get the best length to install the Retainer Washer, Nylon Washer and the Nylok Nut.)**

Refer to Picture Below



8. Install the Retainer Washer, Nylon Washer and the Nylok Nut to the bottom of the screws. Tighten using a 3/8" nut driver or socket and a drill or screw driver. Be careful not to over tighten.

Refer to Pictures Below



7/14/11 Revision

9. After all the screws are tightened use vise-grip type pliers to hold the end of the screws and move them back & forth until they snap. **(These are break-away type screws. Notice some screws may have to be filed or ground down if they do not snap)**

Refer to Pictures Below



10. Install the Snap-On Covers (10) to all of the Retainer Washers. Install Stanchions and Crossbars to desired positions. **(Caution be sure to tighten the Adjustment Knobs before traveling)**

Refer to Pictures Below



Enjoy your **SPORTREK** roof rack!!!

- ➔ *For technical assistance or replacement parts, please call PERRYCRAFT, Inc. at 800.777.7081 or BullDawg Mfg. at 800.784.6478.*
- ➔ *The placement and measurement of the roof rack are our recommendations. Installer may change and modify according to need or preference.*